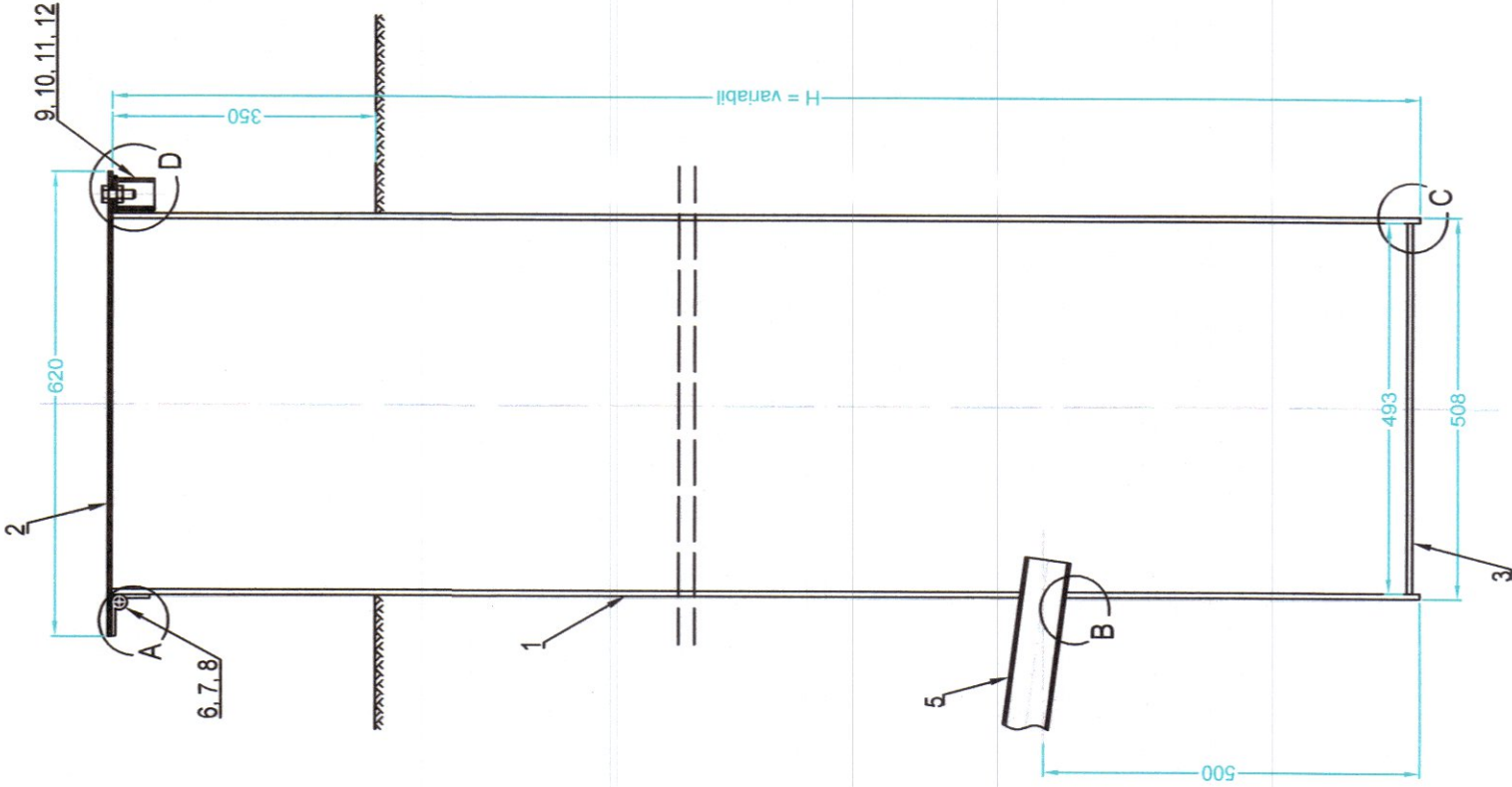
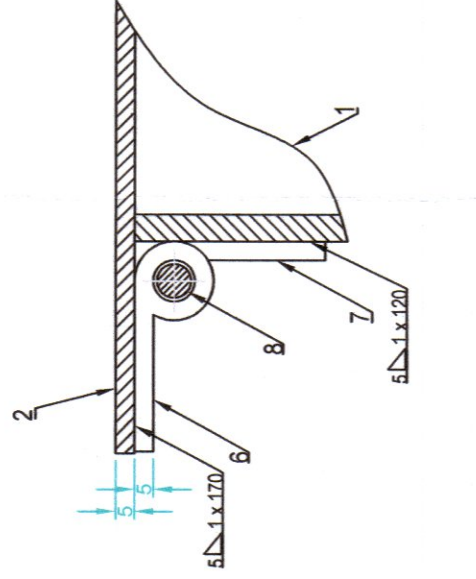


DETALIU CAMIN MONITORIZARE SCURGERI

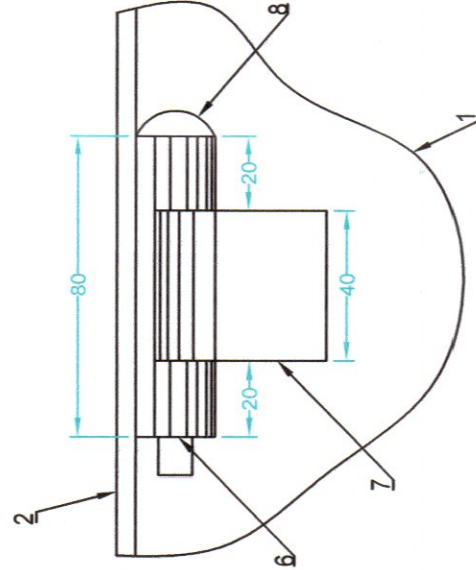
Camin colectare scurgeri
scara 1:10



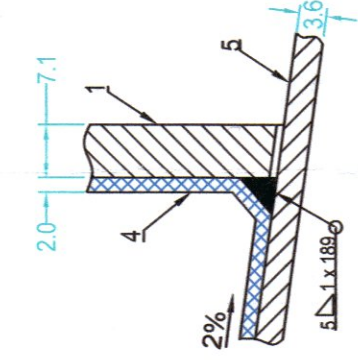
DETALIU "A"
scara 1:2



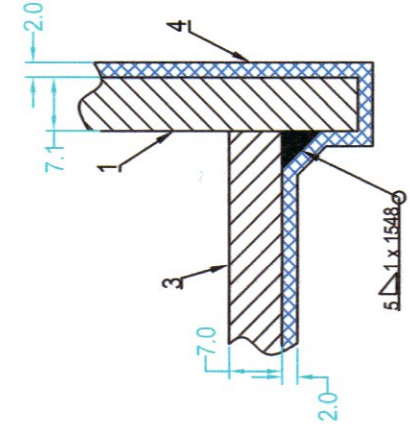
VEDERE FRONTALA
scara 1:2



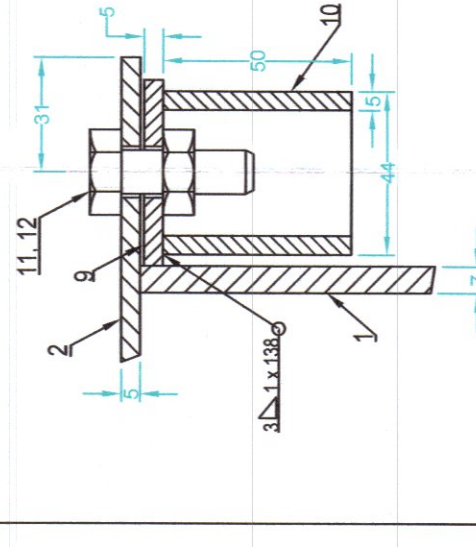
DETALIU "B"
scara 1:1



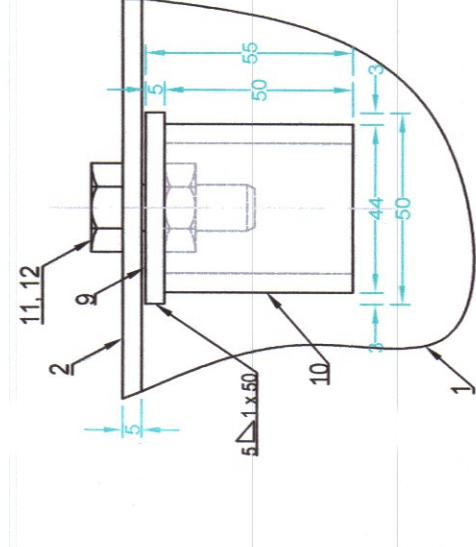
DETALIU "C"
scara 1:1



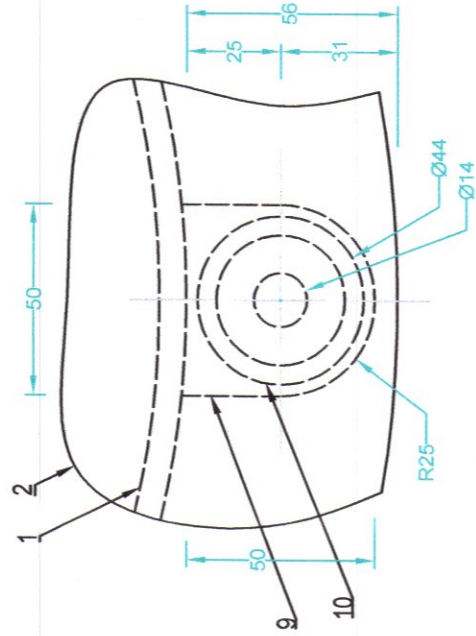
DETALIU "D"
scara 1:2



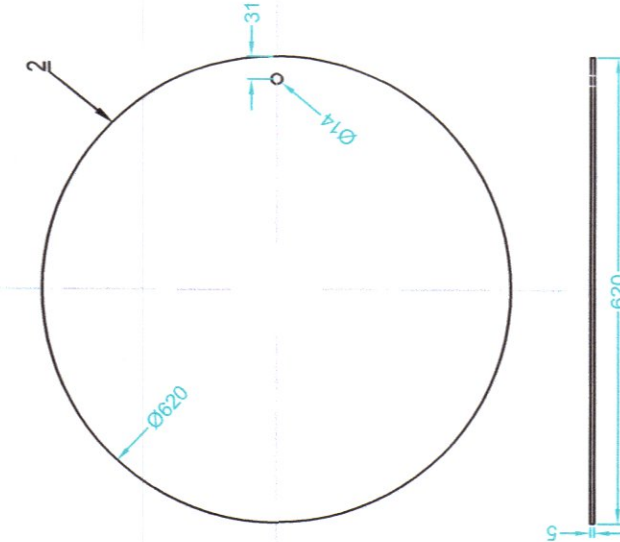
VEDERE FRONTALA
scara 1:2



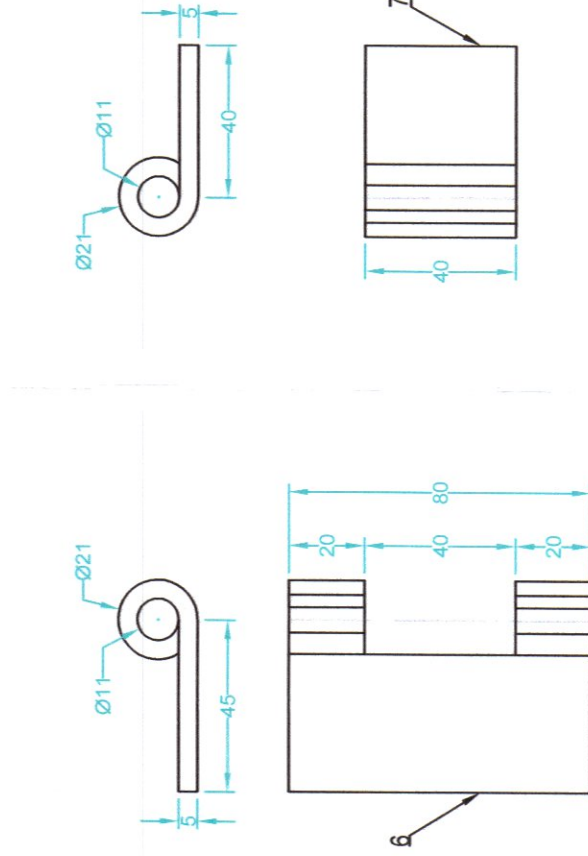
VEDERE IN PLAN
scara 1:2



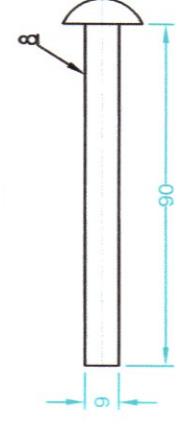
DETALIU CAPAC CAMIN
scara 1:10



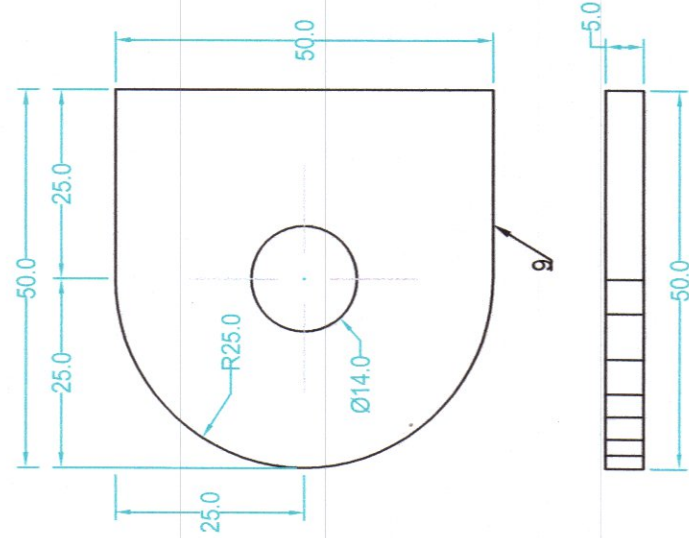
DETALIU BALAMA
scara 1:2



BOLT BALAMA
scara 1:2



DETALIU SUPTOR INCHIDERE
scara 1:1



| Poz. | DENUMIRE | STAS | BUC. | MATERIAL | OBSERVATII |
|------|----------------------|---------------------|------|--------------|--|
| 1 | MANTA CAMIN | SR EN ISO 3183:2020 | 1 | L 245N, PSL1 | Ø508 x 7 x 1 x h SR 6898-1:95 |
| 2 | CAPAC CAMIN | | 1 | OL 37.2K | Tb 620 x 620 x 5mm SR EN 10029:2011 |
| 3 | FUND CAMIN | | 1 | OL 37.2K | Tb 493 x 493 x 7mm SR EN 10029:2011 |
| 4 | INVELIS BITUM | STAS 2484:85 | 1 | bitum | SR EN 10029:2011 |
| 5 | CONDUCTA DE SCURGERE | SR EN ISO 3183:2020 | 1 | L 245N | Ø60.3 x 3.6mm Tb 80 x 45 x 5mm |
| 6 | BALAMA | | 1 | OL 37.2K | SR EN 10029:2011 |
| 7 | CONTRA BALAMA | | 1 | OL 37.2K | Tb 40 x 40 x 5mm SR EN 10029:2011 |
| 8 | BOLT BALAMA | | 1 | OLC 45 | Ø8 x 90mm SR EN 10060:2004 |
| 9 | SUPTOR INCHIDERE | | 1 | OL 37.2K | Tb 50 x 50 x 5mm SR EN 10029:2011 |
| 10 | PROTECTOR INCHIDERE | SR 6898-1:95 | 1 | L 245N | Ø44 x 50 x 5 |
| 11 | SURUB M12 x 35 | SR EN ISO 4018:2011 | 1 | OLC 35 | SREN10083-2:2007 |
| 12 | PIULITA M12 | SR EN ISO 4034:2013 | 1 | OLC 25 | |

| | | | | | | |
|---|------------------------|-----------|---------|--------------------------------|----------------------|----------|
| Verificator/ Expert | Nume | Semnatura | Cerinta | Referat / Expertiza Nr. / Data | Beneficiar: | Pt. nr. |
| | | | | | COMPET S.A. PLOIESTI | 414/2022 |
| Asocierea S.C. SNIF PROIECT S.A. S.C. ATANASIU & SKILLS S.R.L. | | | | | | |
| Specificatie | Nume | Semnatura | Scara: | | | |
| Sei proiect | Ing. Atanasiu Dragos | | 1:10 | | | Faza |
| Desenat | Ing. Radu Florin | | 1:1 | | | PT-CS-DE |
| Proiectat | Ing. Vlasceanu Catalin | | 2024 | | | Pl. nr. |
| DETALIU CAMIN MONITORIZARE SCURGERI | | | | | | 23 |

| Denumire / h (m) camin | h= 2.50m | h= 3.00m | h= 3.50m | h= 4.00m | h= 4.50m | h= 5.00m | h= 5.50m | h= 6.00m | h= 6.50m | h= 7.00m |
|------------------------|----------|----------|----------|----------|----------|----------|----------|----------|----------|----------|
| CAPACE CAMIN | 37.60 | 37.60 | 37.60 | 37.60 | 37.60 | 37.60 | 37.60 | 37.60 | 37.60 | 37.60 |
| MANTA CAMIN | 220.37 | 264.45 | 308.53 | 352.00 | 396.68 | 440.75 | 484.90 | 529.05 | 573.20 | 617.35 |
| TOTAL Kg | 275.98 | 302.05 | 346.12 | 390.20 | 434.27 | 478.35 | 522.50 | 566.65 | 610.80 | 654.95 |